

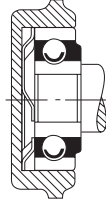
# FINGER SPRING WASHERS

## 指状弹簧垫圈

### Stock sizes in high carbon steel

Our washers are designed to counteract noise, excess wear and vibrations, especially at high speeds. They promote efficiency and smooth operation, reducing skidding wear on rotating elements, as in ball-bearing applications.

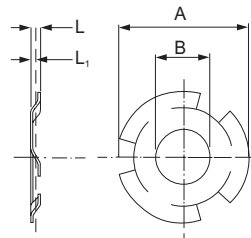
They are also extremely useful in cases of unavoidable loose internal clearance due to special application conditions.



### Material

High Carbon Steel Commercial Type 1074- Certified to ASTM-A684

Certificate of compliance available upon request- Certificate of chemical analysis available at extra cost.



A = Outside Diameter  
B = Inside Diameter  
 $P_1$  = Load at Height

### Finish

Plain finish suitable for various types of finishes including phosphate and black oxide processes, which reduce the possibility of hydrogen embrittlement. Please call us for recommendations on special or specific applications.

### Specification

Finger height (L) is approximately 1/8 in. (3.17mm) for all sizes except F0595-010 which has approximately 3/32 in. (2.38mm) finger height.

### 高碳钢材质的常备元件

指状弹簧垫圈可以消除噪音、磨损、轴端晃动和振动等，尤其是在高速下。指状弹簧垫圈可以提高操作效率和操作平稳性，减少转动件的滑行磨损（例如在滚珠轴承内）。

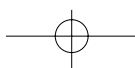
### 材质

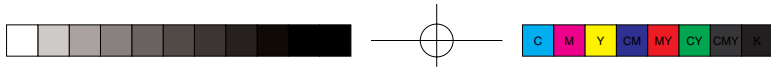
工业用高碳钢1074 - 经 ASTM-A684 认证  
根据客户要求提供产品合格证书。  
客户要求化学分析证书，需支付额外费用。

在内部间隙无法减小的一些特殊应用场合下，指状弹簧垫圈特别适用。

### 末道涂层

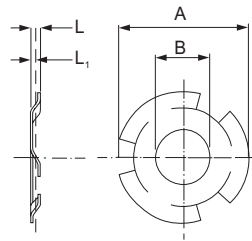
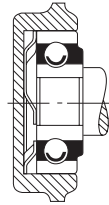
常备的垫圈为光面，适合各种末道涂层，包括用磷酸盐和黑色氧化物进行处理以减小氢脆性。需要特殊或者指定应用场合的部件，请联系我们。





**规格**

所有规格的垫圈的指状高度 (L) 约为 1/8 in. (3.17mm), 除 F0595-010 以外 (其指状高度约为 3/32 in. (2.38 mm))。



A = 外径  
B = 内径  
P<sub>1</sub> = 高度下负载

FINGER SPRING WASHERS 指状弹簧垫圈										
Catalog Number 编号	Outside Diameter (A)*** 外径(A)***		Inside Diameter (B) 内径 (B)		Load Pat. Height 高度下负载(P <sub>1</sub> )		Material Thickness 材料厚度	For use with Bearing O.D.** 轴承外径**		Former Catalog number 原编号
	in	mm	in	mm	@L <sub>1</sub> , .062 in	@L <sub>1</sub> , 1.577 mm		in	mm	
					lb	N				
F0595-010*	0.595	15.11	0.312	7.92	0.3-1.0	1.33-4.45	0.010	0.6299	16.0	S-04
F0728-006	0.728	18.49	0.344	8.74	4-8	17.79-35.6	0.006	0.748	19.0	S-05
F0846-006	0.846	21.49	0.453	11.51	3-7	13.34-31.1	0.006	0.8661	22.0	S-102
F0846-008	0.846	21.49	0.453	11.51	9-14	40.0-62.2	0.008	0.8661	22.0	S-102A
F0926-007	0.926	23.52	0.453	11.51	6-10	26.7-44.5	0.007	0.9449	24.0	S-08
F0926-010	0.926	23.52	0.344	8.74	21-30	93.3-133.4	0.010	0.9449	24.0	S-08A
F1004-006	1.004	25.50	0.516	13.11	5-10	22.2-44.5	0.006	1.0236	26.0	S-09A
F1004-007	1.004	25.50	0.516	13.11	7-13	31.1-57.8	0.007	1.0236	26.0	S-09
F1164-009	1.164	29.57	0.688	17.48	8-14	35.6-62.2	0.009	1.1811	30.0	S-10
F1164-010	1.164	29.57	0.406	10.31	14-23	62.2-102.2	0.010	1.1811	30.0	S-10B
F1164-018	1.164	29.57	0.688	17.48	55-81	244.5-360	0.018	1.1811	30.0	S-10A
F1240-008	1.240	31.50	0.688	17.48	9-15	40-66.7	0.008	1.2598	32.0	S-12
F1240-009	1.240	31.50	0.563	14.30	15-22	66.7-97.8	0.009	1.2598	32.0	S-12A
F1240-010	1.240	31.50	0.688	17.48	14-23	62.2-102.2	0.010	1.2598	32.0	S-12B
F1360-011	1.360	34.54	0.814	20.68	10-17	44.5-75.6	0.011	1.378	35.0	S-15
F1360-014	1.360	34.54	0.814	20.68	16-26	71.1-115.6	0.014	1.378	35.0	S-15A
F1555-014	1.555	39.50	0.971	24.66	13-23	57.8-102.2	0.014	1.5748	40.0	S-17
F1555-018	1.555	39.50	1.000	25.40	28-42	124.5-186.7	0.018	1.5748	40.0	S-17A
F1830-016	1.830	46.48	1.189	30.20	14-26	62.2-115.6	0.016	1.8504	47.0	S-20
F2022-019	2.022	51.36	1.359	34.52	13-27	57.8-120.0	0.019	2.0472	52.0	S-25