

## MECHANICAL COMPRESSION SPRING STRUTS - m-Struts®



Designed for a long life while maintaining consistent, repeatable loads, Henry Mechanical Spring Struts are the ideal choice to replace conventional gas springs. They will withstand harsh environments and wide temperature ranges, and offer a variety of loads, strokes and end configurations. The units utilize advanced coiled spring technology, along with engineered components, to provide a low-friction, highly reliable product.

Henry Mechanical Spring Struts are offered in a full range of standard struts featuring stainless steel springs, and high load struts with carbon steel springs. In addition, our mechanical spring struts and assembly modules can be custom designed to meet the specific needs of many products

### STRUTS FOR MANY INDUSTRIES

Automotive	Marine
Recreational	Industrial
Medical	Nuclear
Pharmaceutical	Chemical
Defense	Agriculture
Construction	

### STRUTS FOR MANY APPLICATIONS

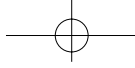
Food Preparation & Processing  
Heating, Ventilation & Aeration  
Motion Control & Dampening

### Mechanical Spring Struts Are The Better Choice

- Long life and consistent loads over time
- Corrosion-resistant stainless steel construction
- Design flexibility to meet individual requirements
- No internal gases or seals
- no hazardous material concerns
- Proven for FDA applications
- Robust design
- Various end configurations available
- Operating temperatures up to 400°F
- Extension and dampening units offer additional flexibility



HENRY® [www.hlspring.com](http://www.hlspring.com)  
Tel +86-0511-8803-6999 <sup>243</sup>



## 机械压缩弹簧拉杆 - m-Struts®



Henry 机械弹簧拉杆不仅可维持稳定、重复的载荷，使用寿命也很长，是代替传统气压弹簧的理想选择。在极恶劣的环境下和极严酷的温度下，均能保持良好的性能，并能满足各种载荷、冲程及配置。这些拉杆采用先进的级盘簧技术以及专业设计的构件，是一款摩擦低、可靠性高的产品。

Henry 机械弹簧拉杆系列不仅有采用不锈钢弹簧的各种标准拉杆，还有采用碳钢弹簧的高负荷拉杆。此外，本公司的机械弹簧拉杆和装配模块还可以按照客户要求定制，满足各个行业内众多产品的特定要求。

### 适用于多种行业

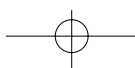
汽车	海运
娱乐	工业
医疗	原子核
制药	化学
国防	农业
建筑	

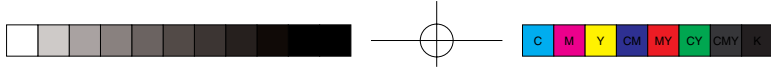
### 适用于多种应用情况

食品制备和加工  
加热、通风和换气  
运动控制和减振

### 机械弹簧拉杆，您的最佳选择

- 寿命长，持续稳定载荷
- 耐腐蚀不锈钢结构
- 设计灵活，可满足个别要求
- 无内气和内密封
- 不涉及有害物质
- 证实适用于FDA应用
- 设计坚固耐用
- 可用的最终配置种类繁多
- 工作温度最高 400°F
- 扩充和减振组件可提高灵活性





# MECHANICAL COMPRESSION SPRING STRUTS - m-Struts®

## 机械压缩弹簧拉杆 - m-Struts®

Select From A Wide Range Of Mechanical Spring Struts – Or We'll Design One For You  
有多款机械弹簧拉杆供您选择，也可为您量身定做

STANDARD MECHANICAL SPRING STRUTS (Stainless Steel Construction – Stainless Steel Springs – M6 Ends)  
标准机械弹簧拉杆 (不锈钢结构 – 不锈钢弹簧 – M6端头)

CATALOG NUMBER 目录号	Rod Dia. (d) 横杆直径		Body Dia. (D) 主体直径		Overall Length (L) 总长 +/-0.060"		Stroke (S) 冲程 +/-0.060mm		Initial Force 初始力度 +/-10%		Final Force 最终力度 +/-10%	
	in	mm	in	mm	in	mm	in	mm	lbs	N	lbs	N
MSBD-051-0076	0.375	9.53	1.25	31.75	6.95	176.53	2.00	50.80	8	35	17	76
MSBD-051-0116	0.375	9.53	1.25	31.75	9.99	253.75	2.00	50.80	30	133	39	173
MSBD-051-0173	0.375	9.53	1.25	31.75	11.61	294.89	2.00	76.20	45	200	63	280
MSBD-051-0280	0.375	9.53	1.25	31.75	12.26	311.40	3.00	127.00	30	133	59	262
MSBD-076-0102	0.375	9.53	1.25	31.75	17.02	432.31	5.00	127.00	18	80	30	133
MSBD-076-0102	0.375	9.53	1.25	31.75	18.67	474.22	5.00	127.00	25	111	39	173
MSBD-076-0102	0.375	9.53	1.25	31.75	18.96	481.58	5.00	127.00	30	133	50	222
MSBD-076-0102	0.375	9.53	1.25	31.75	19.91	505.71	5.00	127.00	35	156	61	271

HIGH LOAD MECHANICAL SPRING STRUTS (Stainless Steel Construction – Carbon Steel Springs – M8 Ends)  
高负荷机械弹簧拉杆 (不锈钢结构 – 不锈钢弹簧 – M8端头)

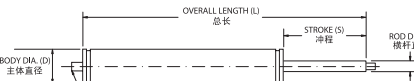
CATALOG NUMBER 目录号	Rod Dia. (d) 横杆直径		Body Dia. (D) 主体直径		Overall Length (L) 总长 +/-0.060"		Stroke (S) 冲程 +/-0.060mm		Initial Force 初始力度 +/-10%		Final Force 最终力度 +/-10%	
	in	mm	in	mm	in	mm	in	mm	lbs	N	lbs	N
MSCD-026-1057	0.500	12.7	1.25	31.75	7.44	188.98	1.04	26.42	176	782	238	1057
MSCD-026-1240	0.500	12.7	1.25	31.75	6.25	158.75	1.31	39.62	100	446	240	1069
MSCD-033-1069	0.500	12.7	1.25	31.75	6.55	166.37	1.56	39.12	53	236	241	1072
MSCD-033-1069	0.500	12.7	1.25	31.75	7.94	201.68	1.54	41.40	140	622	250	1111
MSCD-039-1072	0.500	12.7	1.25	31.75	13.62	345.95	1.63	43.18	242	1075	529	2354
MSCD-039-1072	0.500	12.7	1.25	31.75	9.69	246.13	1.70	55.63	94	417	492	2187
MSCD-039-1111	0.500	12.7	1.25	31.75	10.19	258.83	2.19	77.98	41	181	263	1170
MSCD-039-1111	0.500	12.7	1.25	31.75	15.12	384.05	3.07	78.74	80	355	259	1150
MSCD-041-1067	0.500	12.7	1.25	31.75	11.09	281.69	3.10	117.60	29	127	250	1111



Multiple end configurations, including ball ends, blade or clevis ends are available in various sizes and materials. 多种端头配置，包括球形端头，刀形和U形端头的尺寸和材质多种多样。

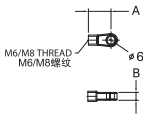


Design and assembly of adjoining hardware (including brackets and mounts) is also offered per customer requirement. 连接硬件 (包括托架和固定架) 也可按照客户要求设计、装配或配套。



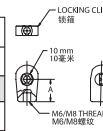
**BLADE END (STAINLESS STEEL)**  
刀形端头 (不锈钢)

Suffix 后缀	M6	A		B	
		in	mm	in	mm
10	M6	0.75	18	0.26	6.70
11	M8	0.81	21.70	0.34	8.70



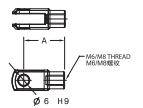
**10 MM BALL END (NYLON)**  
10毫米球形端头 (尼龙)

Suffix 后缀	M6	Ball Size 球体尺寸	A	
			in	mm
30	M6	10mm	0.709	18.01
31	M8	10mm	0.709	18.01



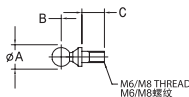
**CLEVIS (STAINLESS STEEL)**  
U形端头 (不锈钢)

Suffix 后缀	M6	A	
		in	mm
40	M6	0.94	24.00
41	M8	1.25	32.00



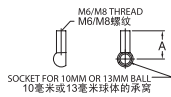
**BALL STUD (STAINLESS STEEL)**  
球头螺栓 (不锈钢)

Suffix 后缀	M6	A		B		C	
		in	mm	in	mm	in	mm
50	M6	0.39	10.00	0.43	11.00	0.47	12.00
51	M8	0.51	13.00	0.51	13.00	0.65	16.50



**10 MM BALL END (STAINLESS STEEL)**  
10毫米球形端头 (不锈钢)

Suffix 后缀	M6	Ball Size 球体尺寸	A	
			in	mm
20	M6	10mm	1.00	25.40
21	M8	10mm	1.18	30.00



NOTE: To order a Mechanical Spring Strut with the ends attached, the end suffix must be added to the part number. For example: To order a Mechanical Spring Strut with a blade end on the rod end and a stainless ball end on the strut end, specify MSBD-076-0102-10-20.  
注意：如要订购采用所附端头的机械弹簧拉杆，必须在部件编号中加入相应的端头后缀。如要订购横杆端采用刀形端头且竖杆端采用不锈钢球形端头的机械弹簧拉杆，请注明MSBD-076-0102-10-20。

