

WAVE SPRING WASHERS

波状弹簧垫圈

Stock sizes in high carbon and stainless steel

Wave spring washers are normally used in thrust-loading applications for small deflections, particularly where radial space is limited. A typical example is the axial loading of ball bearings.

The spring rate is approximately linear between 20% and 80% of available deflection.

Material

Stainless Steel (Parts with suffix *S*)

- Commercial Type 302
- Government AMS 5906 (Chemical only) - Type 302

High Carbon Steel

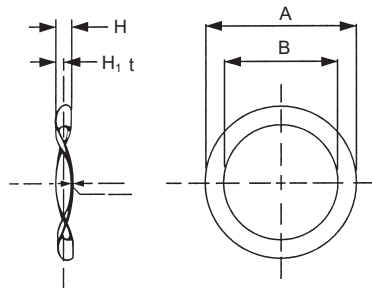
Part W0367-006 to W0855-010

- Commercial 1074-1095* Certified to ASTM-A684
- Part W0925-010 to W7325-065
- Commercial 1074* Certified to ASTM-A684

Certificate of compliance available upon request - Certificate of chemical analysis available at extra cost.

Finish

Washers are carried in stock in plain finish suitable for various types of finishes: either electroplated or mechanically plated, a process which reduces the possibility of hydrogen embrittlement. Please call us for recommendations on special or specific applications.



- A = Outside diameter
- B = Inside diameter
- t = Thickness
- H = Free Height (reference only)
- H₁ = Loaded Height
- P₁ = Load at H₁

高碳钢和不锈钢材质的常备元件

波状弹簧垫圈通常用于变形量小的推力负荷应用场合，特别是在径向间距有限的应用场合。例如滚珠轴承的轴向负荷。

弹性系数为线性的，在允许的扭转下，弹性系数为20%到80%。

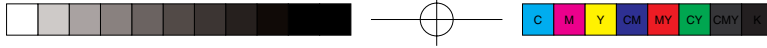
材质

不锈钢（后缀为“S”的部件）

- 工业用 - 302钢
- 美国政府行政管理学会590（仅化学特性） - 302钢

末道漆层

这种垫圈为光面，适合各种类型的漆层，根据客户的特殊要求，也可以采用电镀或者机械镀层，以降低氢引起的脆性。需要特殊或者指定应用场合的部件，请联系我们。



高碳钢

部件 W0367-006 至 W0855-010

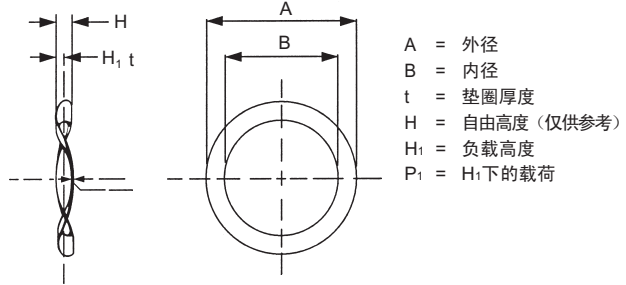
- 工业用 1074-1095-符合 ASTM-A684

部件 W0925-010 至 W7325-065

- 工业用 1074-经 ASTM-A684 认证

根据客户要求提供产品合格证书。

客户要求化学分析证书，需支付额外费用。



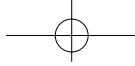
WAVE SPRING WASHERS 波状弹簧垫圈													
Catalog Number* 编号*	Outside Diameter (A) 外径 (A)		Inside Diameter (B) 内径 (B)		Stock Thickness (t) 垫圈厚度 (t)		Height (H) Approximate 高度 (H) (估算)		Loaded Height H ₁ 负载高度 H ₁		Load at Height H ₁ (P ₁) H ₁ 下的载荷 (P ₁)		Former Catalog Number 原编号
	in	mm	in	mm	in	mm	in	mm	in	mm	lb	N	
§ W0183-004-S	0.183	4.65	0.134	3.40	0.0035	0.09	0.023	0.58	0.012	0.30	.25-5	1.1-2.2	-
§ W0242-006-S	0.242	6.15	0.194	4.93	0.0057	0.14	0.030	0.76	0.015	0.38	5-1	2.2-4.4	-
§ W0305-007-S	0.305	7.75	0.243	6.17	0.0066	0.17	0.030	0.76	0.015	0.38	5-1	2.2-4.4	-
W0367-006	0.367	9.32	0.265	6.73	0.006	0.15	0.030	0.76	0.015	0.38	2-4	9-18	R2
W0367-006-S	0.367	9.32	0.265	6.73	0.006	0.15	0.030	0.76	0.015	0.38	2-4	9-18	R2
W0484-009	0.484	12.29	0.397	10.08	0.009	0.23	0.029	0.74	0.020	0.51	3-5	13-22	-
W0492-007	0.492	12.50	0.350	8.89	0.007	0.18	0.035	0.89	0.020	0.51	3-5	13-22	R3
W0492-007-S	0.492	12.50	0.350	8.89	0.007	0.18	0.035	0.89	0.020	0.51	3-5	13-22	R3
W0608-008	0.608	15.44	0.459	11.66	0.008	0.20	0.037	0.94	0.025	0.64	3-5	13-22	-
W0608-008-S	0.608	15.44	0.459	11.66	0.008	0.20	0.037	0.94	0.025	0.64	3-5	13-22	-
W0618-008	0.618	15.70	0.440	11.18	0.008	0.20	0.040	1.02	0.025	0.64	3-5	13-22	R4
W0618-008-S	0.618	15.70	0.440	11.18	0.008	0.20	0.040	1.02	0.025	0.64	3-5	13-22	R4
W0731-009	0.731	18.57	0.588	14.94	0.009	0.23	0.047	1.19	0.030	0.76	3-5	13-22	-
W0734-009	0.734	18.64	0.531	13.49	0.009	0.23	0.050	1.27	0.030	0.76	4-7	18-31	R5
W0734-009-S	0.734	18.64	0.531	13.49	0.009	0.23	0.050	1.27	0.030	0.76	4-7	18-31	R5
W0855-010	0.855	21.72	0.650	16.51	0.01	0.25	0.060	1.52	0.030	0.76	4-7	18-31	R6
W0855-010-S	0.855	21.72	0.650	16.51	0.01	0.25	0.060	1.52	0.030	0.76	4-7	18-31	R6
W0925-010	0.925	23.50	0.719	18.26	0.01	0.25	0.066	1.68	0.033	0.84	6-9	27-40	24
W0925-010-S	0.925	23.50	0.719	18.26	0.01	0.25	0.066	1.68	0.033	0.84	6-9	27-40	24
W1004-011	1.004	25.50	0.780	19.81	0.0105	0.27	0.071	1.80	0.035	0.89	7-10	31-45	26
W1004-011-S	1.004	25.50	0.780	19.81	0.0105	0.27	0.071	1.80	0.035	0.89	7-10	31-45	26
W1080-012	1.080	27.43	0.839	21.31	0.0115	0.29	0.073	1.85	0.036	0.91	8-12	36-53	28
W1102-012	1.102	27.99	0.856	21.74	0.012	0.30	0.075	1.91	0.037	0.94	9-13	40-58	R8
W1159-013	1.159	29.44	0.901	22.89	0.013	0.33	0.080	2.03	0.040	1.02	10-14	44-62	30
W1235-014	1.235	31.37	0.961	24.41	0.014	0.36	0.087	2.21	0.043	1.09	12-18	53-80	32
W1351-015	1.351	34.32	1.051	26.70	0.015	0.38	0.099	2.51	0.049	1.24	15-21	67-93	35
W1351-015-S	1.351	34.32	1.051	26.70	0.015	0.38	0.099	2.51	0.049	1.24	14-20	62-89	35
W1543-017	1.543	39.19	1.201	30.51	0.017	0.43	0.105	2.67	0.052	1.32	17-25	76-111	40
W1543-020	1.543	39.19	1.201	30.51	0.02	0.51	0.125	3.18	0.062	1.57	25-37	111-165	-
W1593-018	1.593	40.46	1.239	31.47	0.018	0.46	0.110	2.79	0.055	1.40	20-28	89-125	R12
W1621-019	1.621	41.17	1.261	32.03	0.0185	0.47	0.112	2.84	0.056	1.42	21-30	93-133	42
W1819-020	1.819	46.20	1.404	35.66	0.02	0.51	0.125	3.18	0.062	1.57	25-35	111-156	47
W2028-022	2.028	51.51	1.575	40.01	0.022	0.56	0.140	3.56	0.069	1.75	29-41	129-182	52
W2132-023	2.132	54.15	1.658	42.11	0.023	0.58	0.148	3.76	0.073	1.85	31-45	138-200	55
W2420-025	2.420	61.47	1.872	47.55	0.025	0.64	0.168	4.27	0.082	2.08	37-53	165-236	62

§ Available in 2 waves only. All other items have 3 waves.

* Numbers with the suffix *S* are stainless steel.

§ 仅提供2个波状弹簧垫圈，其他规格提供3个。

* 带后缀“S”的部件为不锈钢材质。



WAVE SPRING WASHERS 波状弹簧垫圈													
Catalog Number* 编号*	Outside Diameter (A) 外径 (A)		Inside Diameter (B) 内径 (B)		Stock Thickness (t) 垫圈厚度 (t)		Height (H) Approximate 高度 (H) (估算)		Loaded Height H ₁ 负载高度 H ₁		Load at Height H ₁ (P ₁) H ₁ 下的载荷 (P ₁)		Former Catalog Number 原编号
	in	mm	in	mm	in	mm	in	mm	in	mm	lb	N	
W2645-028	2.645	67.18	2.057	52.25	0.028	0.71	0.184	4.67	0.090	2.29	47-67	209-298	68
W2816-030	2.816	71.53	2.200	55.88	0.03	0.76	0.197	5.00	0.097	2.46	53-77	236-343	72
W3118-035	3.118	79.20	2.420	61.47	0.035	0.89	0.207	5.26	0.104	2.64	72-104	320-463	80
W3328-036	3.328	84.53	2.603	66.12	0.036	0.91	0.227	5.77	0.112	2.84	74-106	329-472	85
W3519-038	3.519	89.38	2.740	69.60	0.038	0.97	0.234	5.94	0.116	2.95	82-118	365-525	90
W3917-042	3.917	99.49	3.047	77.39	0.042	1.07	0.258	6.55	0.128	3.25	98-142	436-632	100
W4300-045	4.300	109.22	3.370	85.60	0.045	1.14	0.302	7.67	0.148	3.76	115-165	512-734	110
W4627-047	4.627	117.53	3.612	91.74	0.047	1.19	0.334	8.48	0.162	4.11	130-188	578-836	120
W4997-050	4.997	126.92	3.890	98.81	0.05	1.27	0.355	9.02	0.172	4.37	145-209	645-930	130
W5408-053	5.408	137.36	4.208	106.88	0.053	1.35	0.388	9.86	0.187	4.75	162-232	721-1032	140
W5817-055	5.817	147.75	4.530	115.06	0.055	1.40	0.440	11.18	0.209	5.31	178-256	792-1139	150
W6173-058	6.173	156.79	4.803	122.00	0.058	1.47	0.463	11.76	0.220	5.59	196-282	872-1254	160
W6550-061	6.550	166.37	5.120	130.05	0.061	1.55	0.496	12.60	0.235	5.97	209-301	930-1339	170
W6945-063	6.945	176.40	5.408	137.36	0.063	1.60	0.538	13.67	0.253	6.43	231-333	1028-1481	180
W7325-065	7.325	186.06	5.672	144.07	0.065	1.65	0.575	14.61	0.269	6.83	250-360	1112-1601	190